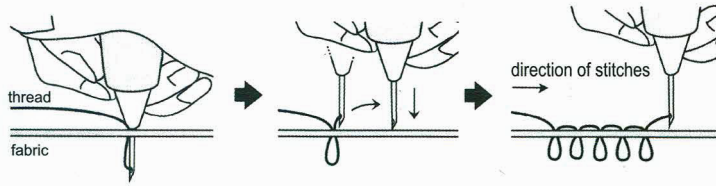
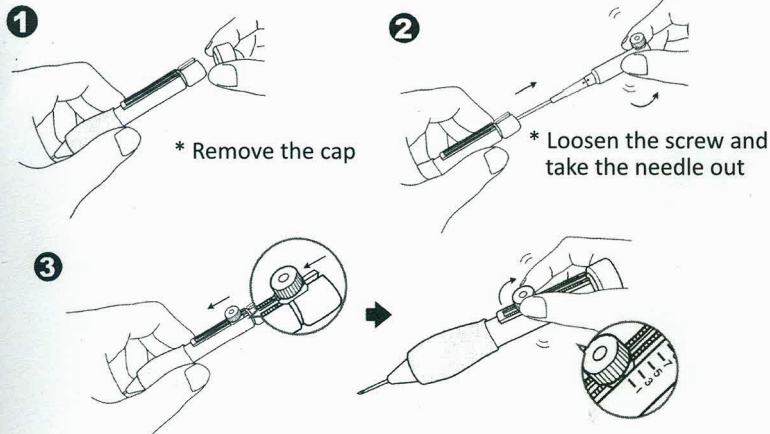


# Punching Technique



- \* Punch needle should penetrate all the way into the fabric so the Grip of the needle touches the fabric. The needle must be pushed all the way in on each stitch to make an even look.
- \* Lift needle out of the fabric, just enough to move to the next stitch. Keep the needle as close to the material as possible. Lifting the needle too high shortens the loops on the front of the design and creates unwanted loops in the back.

# How to exchange the Needle

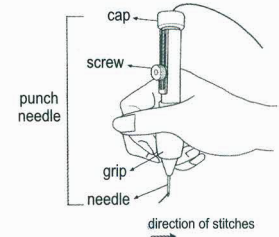


- \* Insert the needle into the barrel and tighten the screw once the loop length is determined

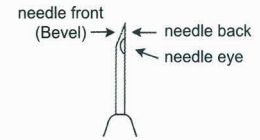
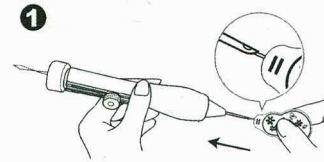
# How to Punch

## HOLDING THE NEEDLE

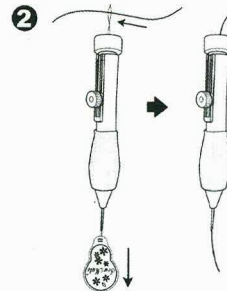
- \* Hold the punch needle on its Grip
- \* Face the Needle Front (Bevel) in intended direction and keep in a vertical position.



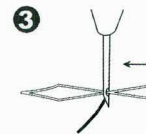
## THREADING THE NEEDLE



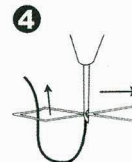
- \* Insert the threader into the Punch Needle from the needle point and completely through its barrel until it comes out the opposite end of the punch needle.



- \* Insert thread/yarn into the Threader Loop and pull the Threader back of the needle
- \* Pull the thread/yarn downward out of the Threader Tip end and remove the thread or yarn from the threader



- \* Insert the Threader through the Needle Eye from the Needle Back of the needle tip



- \* Place the end of the thread/yarn into the Threader and pull the threader back out of the needle eye
- \* Pull the thread/yarn downward out of the threader tip and remove the thread/yarn from the threader



- \* Threading is completed